

DIGITAL CYCLE COUNTER INSTALLATION INSTRUCTIONS

INSTRUCTION PART NO. 2353900 C.R.-3289 REVISION 3

INSTALLATION

Caution: Before installation or any maintenance is performed on the pump system, ensure that all steam, condensate, and air or gas lines are closed and internal pressure is relieved to prevent injury.

Mount the 'Cycle Counter' in a vertical position at a level convenient for reading, using a length of 1/4" pipe to elevate the counter as necessary. A 1/4" NPT tapped hole is provided in the pump cover for that purpose.

We recommend installing a 1/4" petcock valve for ease of service. The supplied pigtail protects the counter from overheat through direct contact with steam.

MINIMUM PMP BACKPRESSURE: 15 PSIG

OPERATING TEMP. RANGE

Counter: 32 to 122 F
 (0 TO 50 C)
 Sensor: -20 to 280 F
 (-30 to 137 C)

PUMP CAPACITIES

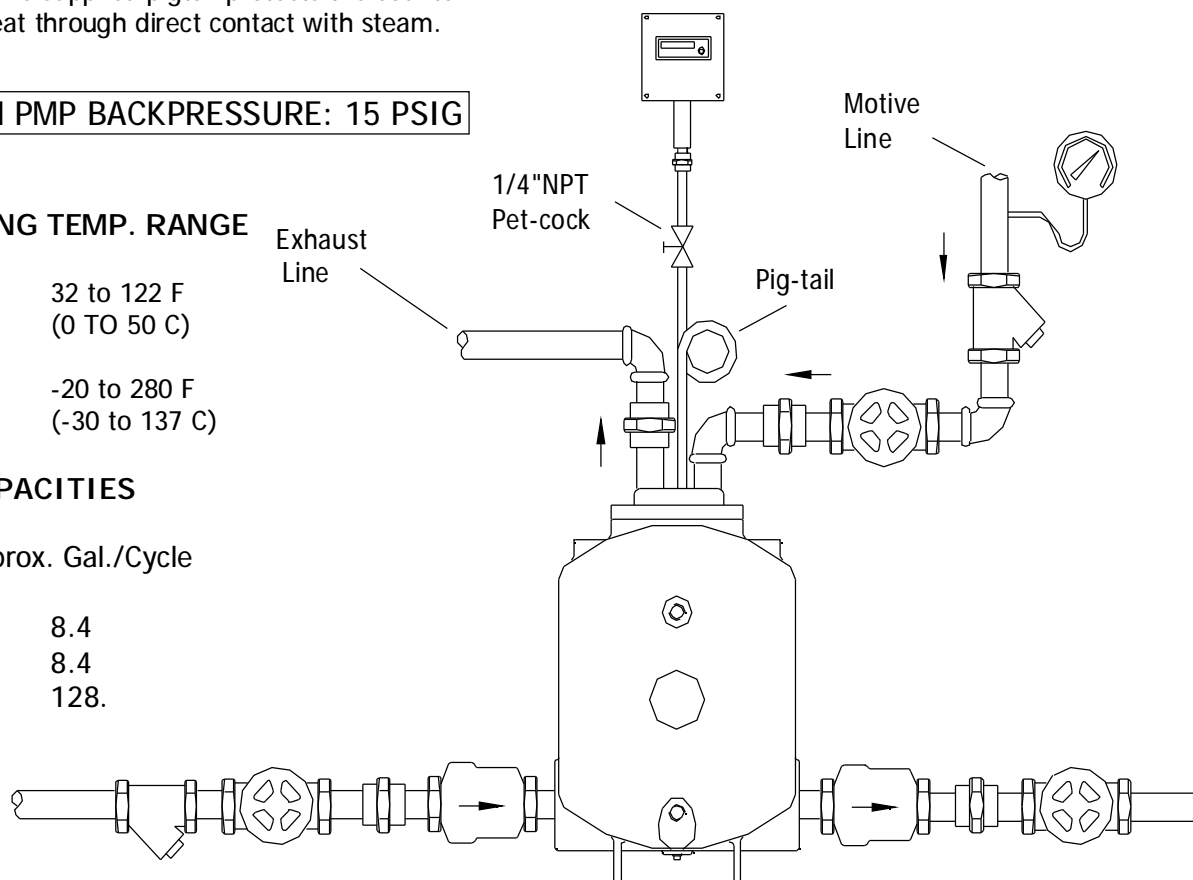
	Approx. Gal./Cycle
PMPC	8.4
PMPF	8.4
4" PMPBP	128.

OPERATION

The monitoring of condensate return pump operation is an important activity for plant operations and maintenance personnel.

The use of pressure powered pumps equipped with a digital cycle counter provides the ability to monitor pump operation, schedule preventative maintenance and estimate the amount of condensate recovered.

Note: Operation of the counter requires the pump exhaust be vented to atmosphere.



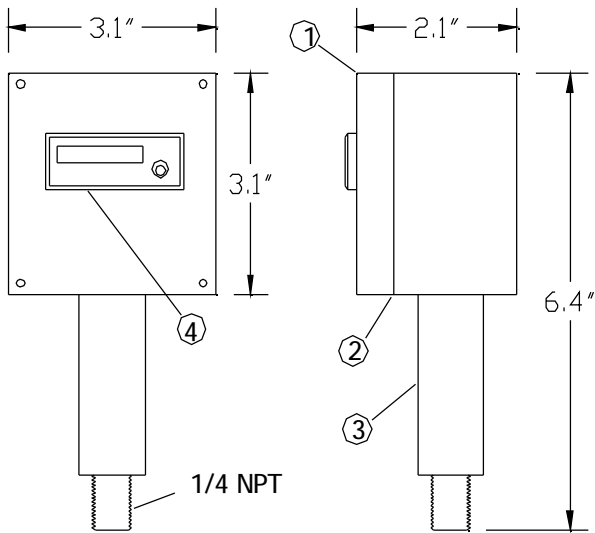
MAX. SENSOR PRESSURE

PMO: 300 PSIG(21 Barg)

MIN. SENSOR OPERATING PRESSURE

15 PSIG(1 Barg) (Min. back pressure)

Each Watson McDaniel Company Product is warranted against defects in material and workmanship for one year from date of shipment. This warranty extends to the first retail purchaser only. All defective material must be returned to the person from whom you purchased the Product, transportation prepaid, free of any liens or encumbrances, and if found to be defective will be repaired free of charge or replaced, at the warrantor's or seller's option. If the material is replaced, any replacement will be invoiced in the usual manner and after inspection of alleged defective material an adjustment will be made for depreciation caused by purchaser's use. In no event will Watson McDaniel Company be liable to do more than refund the original contract price. Incidental and consequential damages are excluded, whether under this warranty or otherwise. All implied warranties, including warranties of merchantability and fitness for a particular purpose, are disclaimed and excluded.



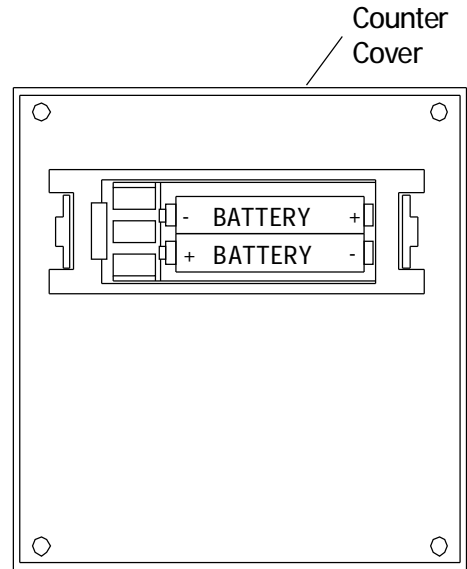
WEIGHT - 1.8#

SPECIFICATIONS

- Enclosure NEMA 1, 3R, 4, 12
- Counter 6 Digit LCD display-NEMA 4
Resettable (See instructions on back)
- Sensor All Stainless Steel Components
- Optional Auxillary set of SPDT dry contacts for
Connection to Bldg. Energy
Management System.
Contact ratings:
5 amp. resistive 110/250 VAC
3 amp. inductive 28 VDC

CONSTRUCTION MATERIALS

NO.	PART	MATERIAL
1.	Enclosure	Aluminum
2.	Gasket	Neoprene
3.	Sensor	Stain. Steel
4.	Counter	Aluminum



BATTERY REPLACEMENT

To replace the batteries in the counter, first remove the cover of the enclosure (see caution note above before servicing). Slide battery cover to the left until the right hand lip disengages. Install batteries as shown, observing proper polarity. Recommended batteries are (Qty. 2) 'N' alkaline type. To reinstall battery cover, insert left hand lips into case first, push cover to the left until right hand lip drops down and cover snaps back into place.

SPECIFICATIONS

- Max. operating pressure: 300 psig
- Min. back pressure: 15 psig
- Temperature range: -67 to 278°F
- All wetted parts: Stainless Steel

COUNTER RESET

The unit is supplied with the front panel reset button deactivated. To activate, connect the Yellow wire from the RST. EN (Reset Enable) input to the Common, as shown below. To deactivate, remove the Yellow wire from the RST. EN input.

